

# LARAEC COUNSELING ACTION PLANNING TEAM

## ONBOARDING BEST PRACTICES



### 1. Establishing Rapport

Ask about prior education, experience, barriers to learning, short-term and long-term goals, and availability to create the best plan for your student.

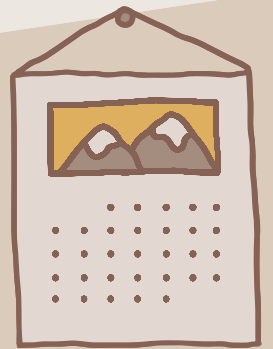
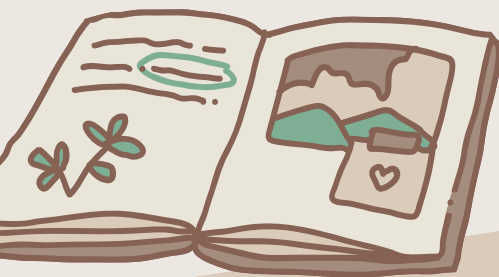
### 2. Communication Accessibility

Use tools like Google Voice, Remind, e-mail, or Zoom to provide flexibility in the way students communicate with you.



### 3. Multiple Means of Assessment for Placement

Aside from CASAS, practitioners can use transcripts, writing samples, oral placement assessments, and past test scores.



### 4. Contextualize Student Educational Plan

Help student set realistic goals by using context to develop their plan.

Considerations include

- current placement,
- schedule availability, and
- length of their program.

Be sure to check with students about any questions or concerns needing clarification.

